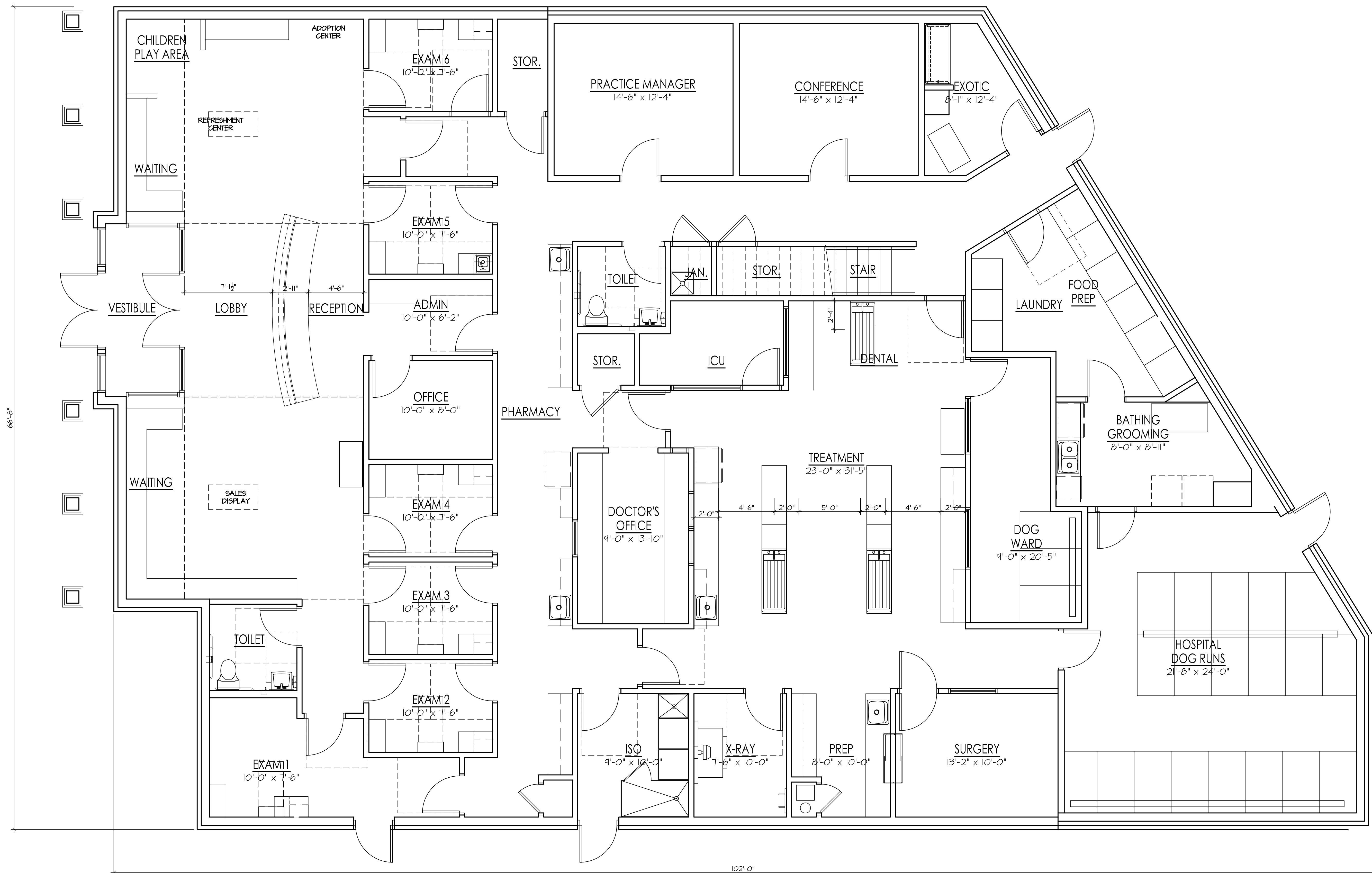


P:\2016\20160029\Drawing\Rev\Detail Development\20160029\_A-1.0\_Plan.dwg, 6/24/2016 4:40 PM, A-1.0  
COPYRIGHT LINDEN GROUP INC.



AREA: 5,900 SF  
PROPOSED 1ST FLOOR PLAN "C"



ARCHITECTURE  
LAND PLANNING  
INTERIOR ARCHITECTURE  
LANDSCAPE ARCHITECTURE  
10100 ORLAND PARKWAY SUITE 110  
ORLAND PARK, ILLINOIS 60467  
P:708.799.4400 F:708.799.4434  
WWW.LINDENGROUPINC.COM

RWE MANAGEMENT COMPANY  
16 W 361 S. Frontage Rd., Suite 106  
Bur Ridge, IL 60527  
(630) 734-0883  
JAC@RWE MANAGEMENT.COM

Care Animal Hospital  
of Libertyville  
1214 W Park Ave.  
Libertyville, IL 60048

DRAWN DESCRIPTION

DATE

2016-0029

PROJECT NUMBER

FILE NUMBER

8-24-2016

DATE

TMH

DRAWN BY

FINAL REVIEW

COPYRIGHT - LINDEN GROUP INC.  
ALL RIGHTS RESERVED.  
ALL DRAWINGS, SPECIFICATIONS, PLANS, CONCEPT ARRANGEMENTS  
AND DESIGN REPRESENTED OR REFERRED TO IN THESE DOCUMENTS  
ARE THE PROPERTY OF LINDEN GROUP INC. AND SHALL REMAIN THE PROPERTY OF  
LINDEN GROUP INC. NONE OF THE ABOVE MAY BE REPRODUCED OR  
ANY PERSON FOR ANY PURPOSE WITHOUT THE EXPRESS WRITTEN  
AUTHORIZATION OF LINDEN GROUP INC.

SHEET NAME

A-1.0

SHEET

OF